

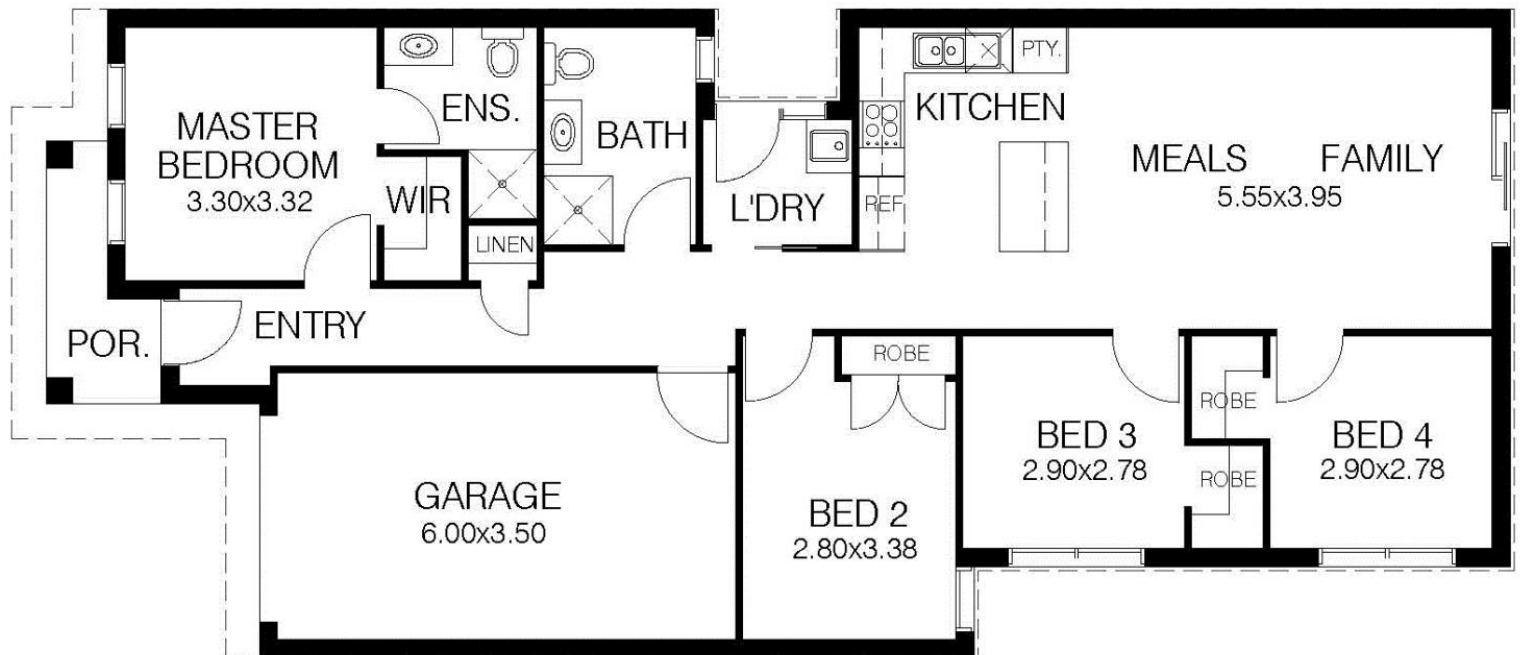
House and Land Package \$636,500

Bedroom 4 | Bathroom 2 | Garage 1



Lot 154 Vela Avenue, Clyde North
House Design: Ashlea 115

House Size: 141.9m²
Land Size: 340m²



Ashlea

15.3 squares Including Single Garage
4 Bedrooms & 2 Bathrooms

INCLUSIONS:

- 600mm Stainless Steel Under-bench Oven
- 600mm Electric Ceramic Hotplates
- 600mm Stainless Steel Canopy Rangehood
- Electric Inverted Ducted Heating/Cooling to 6 Points
- Electric Storage Hot-Water Unit
- Grey-Water connection to Toilets & Laundry where available
- Melamine Kitchen & Vanities
- 20mm Stone Bench tops
- Overhead Cupboards Included
- 900 X 900 Shower to Ensuite & Bathroom
- White Bathroom and Ensuite Products
- Modern Square Vanity Basins
- Clear and Pivot Shower Screens
- Mirrors in Ensuite and Bathroom
- Exhaust fans to Bathroom and Ensuite
- WIR to Master, Bedroom 3 & 4, Built in Robes Bedroom 2
- Corinthian Front Door PURB 4
- Flush Internal doors
- Painted Skirts and Architrave
- Tiled Skirts to Wet Areas
- Chrome door furniture
- Downlights throughout
- Mock Casement Aluminum Windows to Front
- Window Locks
- Flyscreens to all windows
- Floor tiles to Entry, Kitchen and Wet areas
- Carpet from Builders range
- Render to Garage Front
- All Plans, Specifications & Soil Report
- Engineer Class M Slab, engineered edge beams at 200mm
- Electrical underground works only
- Sewer up to 45 metres
- Storm water up to 60 meters
- Fall Allowance 300mm
- Concrete pump and temporary fencing as required
- Circuit Breaker and Smoke Detector
- Garden Taps Front and Rear
- Termite Protection
- Solid Pine Frame
- Insulation as per 7 star energy rating report
- 3.5kw Solar Power
- Ten Year Structural Guarantee
- Three Month Defect Period
- Single Garage with front Panelift door

TICKLED-PINK PACK INCLUDED
KNOCKOUT PACK INCLUDED

BATT PACK NOT INCLUDED

*Excludes Bushfire Protection Upgrade



Price valid until 1st March 2027