

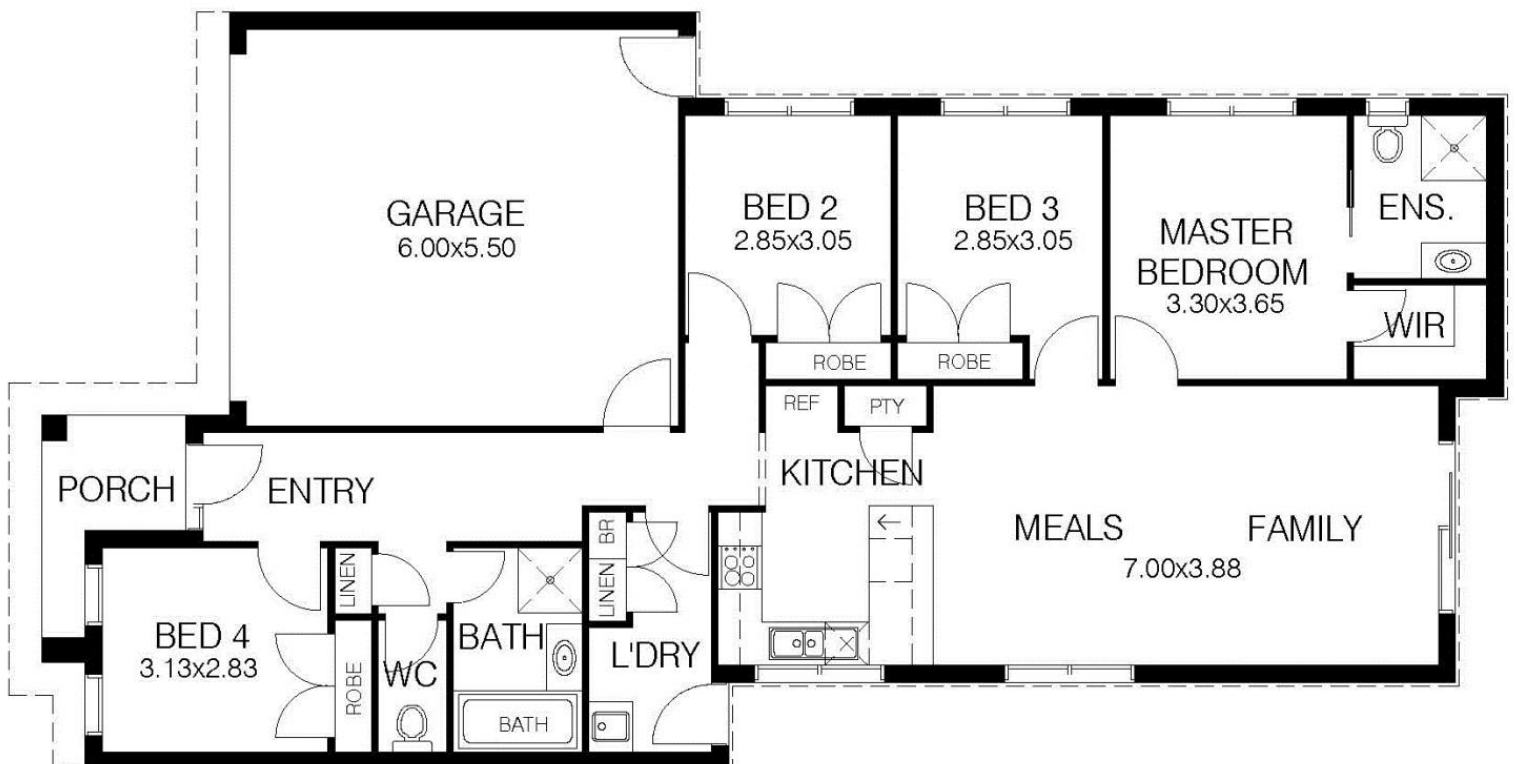
House and Land Package \$647,200

Bedroom 4 | Bathroom 2 | Garage 2



Lot 142 Hadar Way, Clyde North
House Design: Dallas 128

House Size: 168.4m²
Land Size: 294m²



DALLAS

18.1 squares Including Double Garage with Panel Lift Door
4 Bedrooms & 2 Bathrooms

INCLUSIONS:

- 600mm Stainless Steel Under-bench Oven
- 600mm Electric Ceramic Hotplates
- 600mm Stainless Steel Sliding Rangehood
- Electric Inverted Ducted Heating/Cooling to 6 Points
- Electric Storage Hot-Water Unit
- Grey-Water connection to Toilets & Laundry where available
- Dishwasher & Microwave Space
- Melamine Kitchen and Vanities
- 20mm Stone Benchtops
- Overhead Cupboards
- Square Mixer Taps Throughout
- White Bathroom and Ensuite products
- 900 x 900 Tiled Shower to Bathroom & Ensuite
- Modern Square Vanity Basins
- Mirrors in Bathroom and Ensuite
- Clear and Pivot Shower screens
- Exhaust fans to Bathroom, Ens & Toilet
- Walk in Robe to Master Bedroom
- Built in Robes to Bedrooms 2, 3 & 4
- Spacious Linen cupboard
- Corinthian 820mm PURB 4 Front Door
- Flush Internal Doors
- Chrome Door Furniture
- Painted Skirts and Architrave
- Downlights throughout
- Floor Tiles to Entry, Kitchen and Wet Areas
- Carpet from Builders Range
- Locking aluminum windows throughout
- Tiled Roof
- Colorbond Fascia and gutter
- Render to Garage Front
- All Plans, Specifications & Soil Report
- Engineer Class M Slab, engineered edge beams at 200mm
- Fall Allowance 300mm
- Electrical underground works only
- Sewer up to 45 meters
- Storm water up to 60 meters
- Concrete pump and temporary fencing as required
- Circuit Breaker and Smoke Detector
- Garden Taps Front and Rear
- Termite Protection
- Solid Pine Frame
- Insulation as per 7 star energy rating report
- 3.5kw Solar Power
- Ten Year Structural Guarantee
- Double garage with automated front Panel Lift Door

**TICKLED-PINK PACK INCLUDED
KNOCKOUT PACK INCLUDED**

**BATT PACK NOT
INCLUDED**

*Excludes Bushfire Protection Upgrade

