

House & Land Package

Lot 116 Tabit Circuit Clyde North
Title expected December 2026

Clovelly 27

BRIDGEWATER

From **\$870,558**



7 STAR
ENERGY RATED

2590mm
CEILINGS

FLOORING
THROUGHOUT

House Size
27.7sq

House Dimensions
12.45m W x 23.36m L

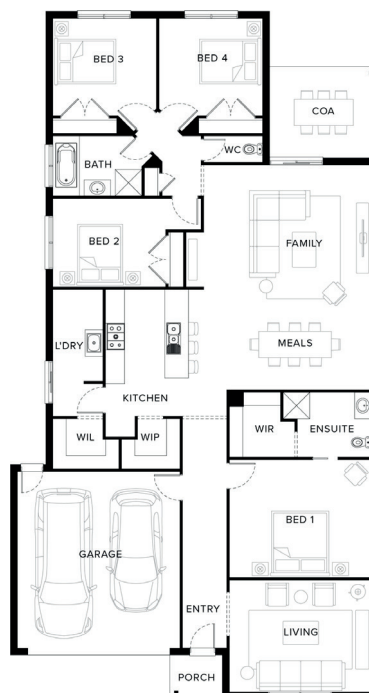
Block Size
463m²

Lot Size
14m W x 33.11m L



Inclusions

- Fixed site costs
- Developers guidelines
- Choice of Included Facades
- 7 Star energy efficiency rating to all orientations
- Up to 5.0kw solar PV system and Inverter
- 2590mm ceilings to ground floor
- Downlights to Entry, Kitchen, Family and Meals
- Choice of Laminate or Tiled flooring to Entry, Kitchen, Family and Meals. Carpet to the remaining areas
- 900mm Upright Stainless Steel oven and cooktop
- 20mm Quantum Zero Benchtops to Kitchen, Ensuite, Bathroom and Powder Room



Contact

Michael Stephenson
0438 269 147
mstephenson@fairhavenhomes.com.au

Fairhaven Homes



VIEW
MORE
PACKAGES

Terms and conditions apply. See website for details. CDB-U 48497.